



21 Kenilworth Road, Leamington Spa, CV32 6JD

**SHELDON
BOSLEY
KNIGHT**

LAND AND
PROPERTY
PROFESSIONALS

Property Description

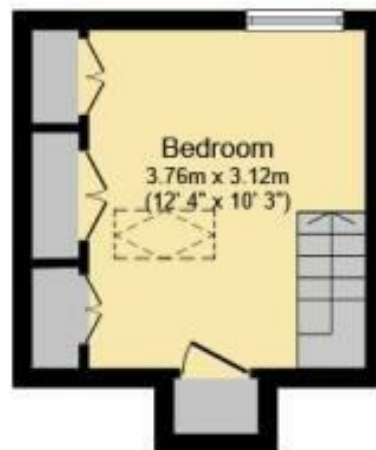
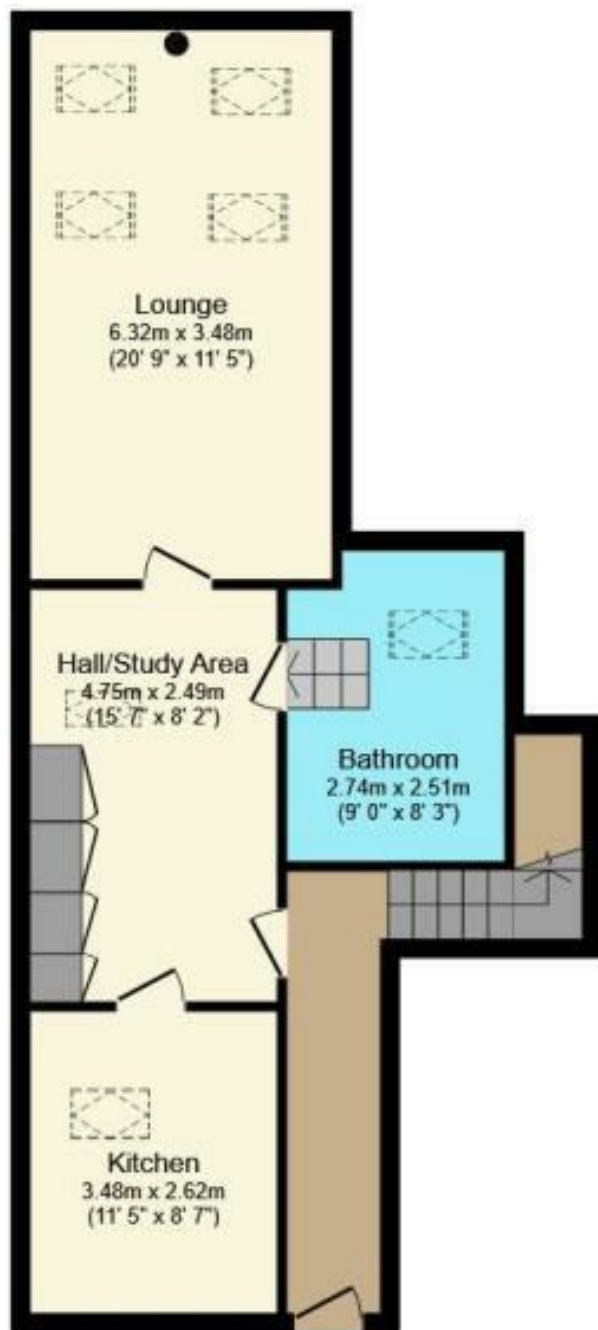
This unique and quirky top floor one bedroom apartment offers spacious and well proportioned living accommodation throughout.

This fabulous home comprises in brief - Entrance hallway, double bedroom with built in wardrobes, stairs leading to upper level, modern kitchen with range of integrated appliances, generous landing with storage cupboards, bathroom with full suite including separate double shower cubicle and a light and bright living room with character window and ample space to create a dining area.

Outside the property has an allocated parking space for one car.







Key Features

- Unique top floor apartment
- One double bedroom
- Easy walk into town centre
- Spacious living accommodation
- Allocated parking space
- Quirky throughout
- Share of Freehold

**Offers Over
£200,000**

EPC Rating - C

Tenure - Leasehold - Share of Freehold

Council Tax Band - C

Local Authority -
Warwick District Council

We routinely refer clients to both our recommended Legal Firm and a panel of Financial Services Providers. It is your decision whether you choose to deal with these companies. In making that decision, you should know that we receive a referral fee